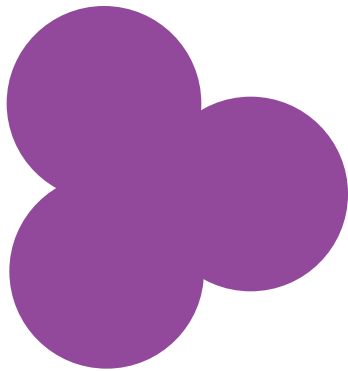
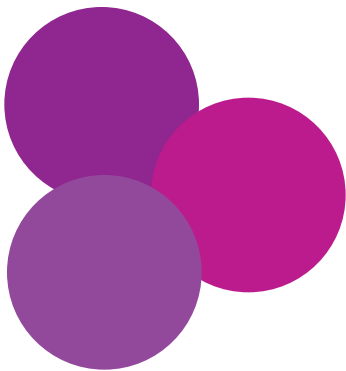


Overlapped shapes (like a bunch of grapes) can be depicted in several different ways with Illustrator. As a new user of Illustrator, it's natural to draw circles with a black stroke and fill with a solid color as depicted in sample 1.



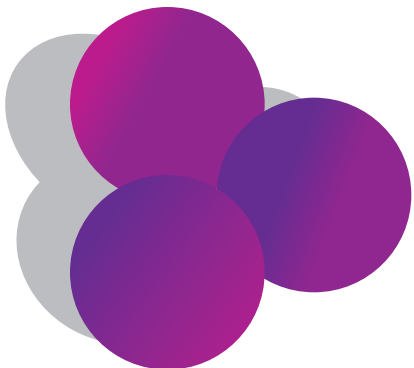
The stroke is not very natural but if you remove it you lose definition of the individual objects. The overall image becomes very flat.



There are a couple of ways to add contrast. The easiest is to change the fill color very slightly so that each object stands out from its neighbor. The basic color swatches palette has 2 or 3 variations of a color built in and you can mix your own with the mixing palette.



A more sophisticated coloring technique (we get to it in CIB chapt 3) is to create gradients which are a more natural representation of light affecting the surface of an object. We'll be using gradients a lot in future work. Explore the possibilities if you have time.



Finally...the effect of light on any object results in shadows and highlights. Simple solid filled objects make basic shadows..just put them on a new layer below the main objects. Highlights are typically on the surface where light strikes. It's important to think about the direction of light and make sure it's relatively consistent.